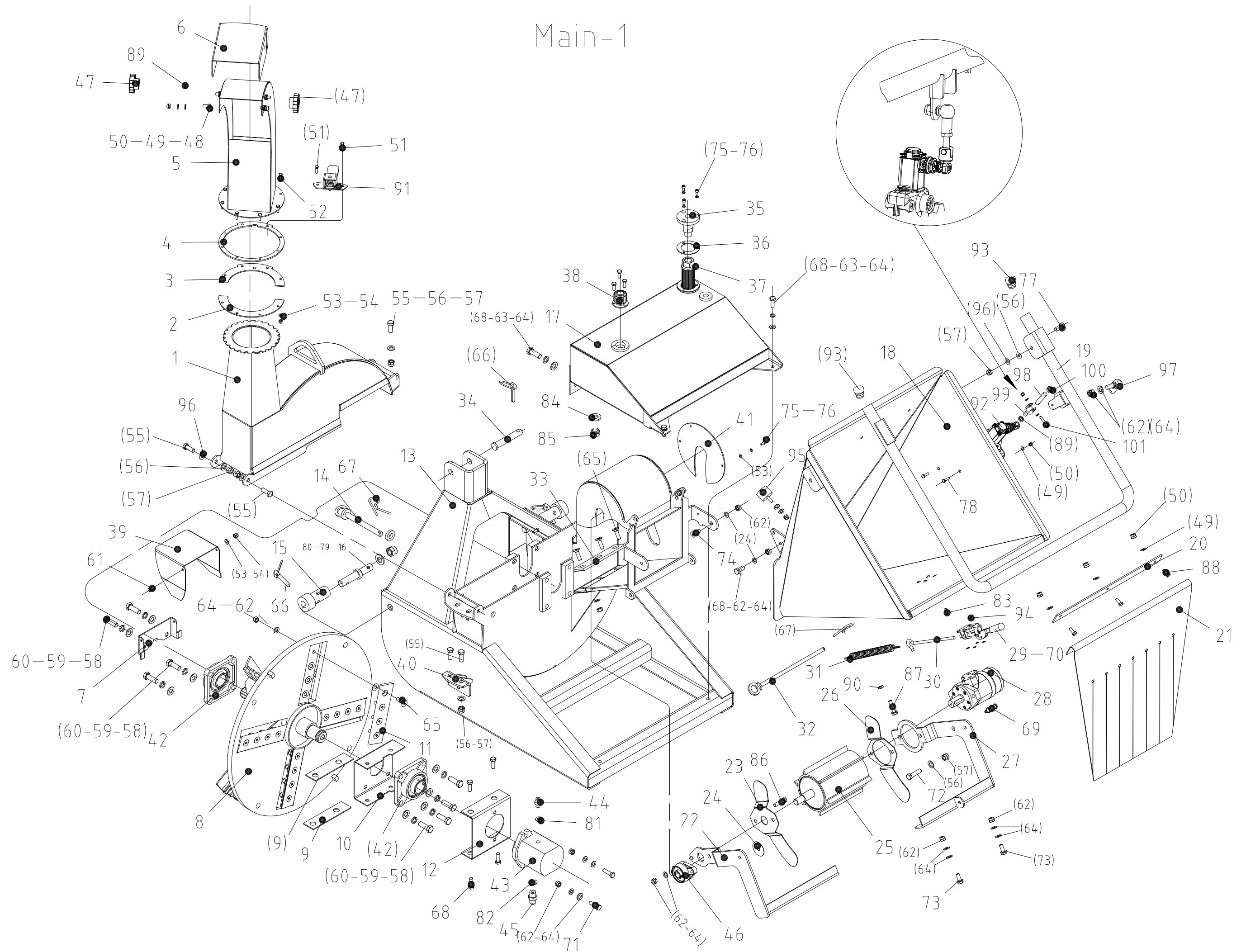


Main-1

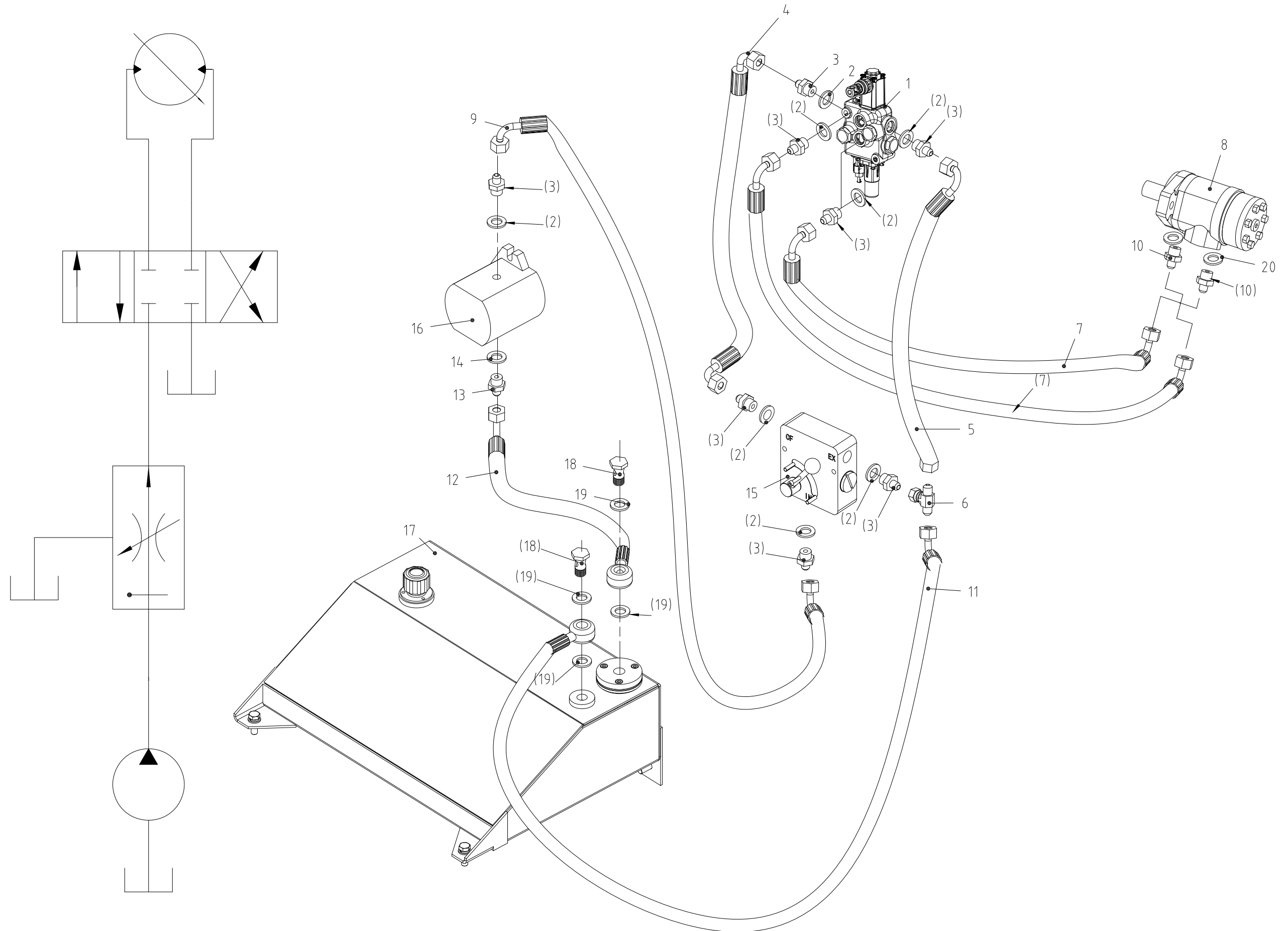


Ser no.	Part no.	T6 no.	Part Name.	Qty
1	W.BX42B.010	11000200872	Discharge neck weldment	1
2	W.BX42B.113	11000000267	Flange I under the discharge port	1
3	W.BX42B.101	11000000258	Flange II under the discharge port	1
4	W.BX42B.120	11000000269	The intermediate rotation plate	1
5	W.BX42B.012	11000200874	Spout welded pieces	1
6	W.BX42B.102	11000000259	Discharge cap	1
7	W.BX42B.105	11000000261	Input shaft protective cover plate	1
8	W.BX42B.015	11000200877	Fly wheel weldment	1
9	W.BX42B.103	11000000260	Pump shock absorber	2
10	W.BX42B.024	11000200886	Inside support bracket weldment	1
11	W.BX42B.132	11010200049	Fly knife	4
12	W.BX42B.108	11000000263	Outside support bracket	1
13	W.BX42B.011	11000200873	Base weldment	1
14	W.BX42B.022	11000200884	Safety pin weldment	1
15	W.BX42B.118	11000100333	Suspension pin hat	2
16	EFH175-105	11000100021	Lower suspension pin	2
17	W.BX42B.013	11000200875	Hydraulic tank weldment	1
18	W.BX42B.019	11000200881	Feeding bucket weldment	1
19	W.BX42B.020	11000200882	Reversing lever weldment	1
20	W.BX42B.114	11000000268	Rubber inlet baffle plate	1
21	W.BX42B.116	11000000271	Rubber inlet baffle	1
22	W.BX42B.017	11000200879	Left spring seat weldment	1
23	W.BX42B.112	11000000266	Left roller installed plate	1
24		11011800000	Nylon pads 10	4
25	W.BX42B.016	11000200878	Roller weldment	1
26	W.BX42B.111	11000000265	Right Roller installed plate	1
27	W.BX42B.018	11000200880	Right spring seat weldment	1
28	155160A1212A	11010900000	Motor 160	1
29	GTY-302F	11010500034	Quick fixture	1
30	W.BX42B.119	11000100334	Spring hook	1
31	W.BX42B.201	11010300032	Tension spring 4-30-220	1
32	W.BX42B.023	11000200885	Limit pin weldment	1
33	W.BX42B.104	11010200048	Fixed knife	1
34	BX42S.109	11000100331	Upper suspension pin	1
35	W.BX42B.121	11010600076	Oil filter flange	1

36	W.BX42B.115	11000000270	Fuel tank rubber pad	1
37	WU-25*100	11010900042	Suction filter	1
38	QUQ1	11010900034	Filler filter	1
39	W.BX42B.106	11000000262	Input shaft protective cover plate	1
40	W.BX42B.021	11000200883	Tongue scraping cutter weldment	1
41	W.BX42B.110	11000000264	Roller mounting plate	1
42	UCF208	11011500059	Bearings	2
43	2PF18L10P02	11010900025	Pump 18 (L)	1
44	W.BX42B.123	11010600077	Valve body connector	1
45	W.BX42B.130	11010600079	Pump inlet connector	1
46	UCFL204	11011500062	Bearings with diamond	1
47		11011800083	Seven knob M8	2
48	GB/T70.2-2000	14060300002	Hexagon flat head screw M8×20	4
49	GB97.1-85	14040000002	Flat pad 8	17
50	GB889.1-86	14050100002	Locknut M8	9
51	GB5782-86	14010100004	Hexagonal bolts M6×25	3
52	GB5782-86	14010100003	Hexagonal bolt M6×20	6
53	GB97.1-85	14040000001	Flat pad 6	15
54	GB889.1-86	14050100001	Locknut M6	11
55	GB5782-86	14010100067	Hexagonal bolt M12×30	5
56	GB97.1-85	14040000004	Flat pad 12	9
57	GB889.1-86	14050100006	Locknut M12	9
58	GB5782-86	14010300017	Hexagonal bolt M14×1.5-40	8
59	GB93-87	14020000009	Shells pad 14	8
60	GB97.1-85	14040000005	Flat pad 14	8
61	GB5782-86	14010100002	Hexagonal bolt M6×16	2
62	GB889.1-86	14050100003	Locknut M10	27
63	GB93-87	14020000007	Shells pad 10	27
64	GB97.1-85	14040000003	Flat pad 10	39
65	GB/T70.3-2000	14060100033	Hexagon socket head screw M10×35	19
66		11011700014	Latch Φ11	3
67		11011700015	R pin Φ4	3
68	GB5782-86	14010100040	Hexagonal bolt M10×30	10
69	GN617.1-5-A	11011700006	Indexing pin	1
70	GB97.1-85	14040000000	Flat pad 5	4
71	GB5782-86	14010100043	Hexagonal bolts M10×45	2

72	GB5782-86	14010100065	Hexagonal bolts M12×45	2
73	GB5782-86	14010100039	Hexagonal bolts M10×25	2
74	GB/T70.3-2000	14060100032	Hexagon socket head screws M10×30	2
75	GB/T70.3-2000	14060100002	Hexagon socket head cap screws M6×12	6
76	GB93-87	14020000005	Shells pad 6	6
77	GB5782-86	14010100065	Hexagonal bolts M12×25	2
78	GB5782-86	14010100025	Hexagonal bolts M8×55	2
79	GB97.1-85	14040000015	Flat pad 22	2
80	GB889.1-86	14050100013	Locknut M22	2
81		11011200105	O-ring	8
82	BS/A23.5	11011200004	Washer 7/8	1
83	GB5782-86	14060300001	Hexagon flat head screws M5×15	4
84		11011200009	Washer 16	1
85		14000500004	Oil plug M16×1.5	1
86	GB5782-86	14010100042	Hexagonal bolt M10×40	2
87	GB5782-86	14010100045	Hexagonal bolt M10×55	1
88	GB5782-86	14010100017	Hexagonal bolt M8×20	3
89	GB6172.1-86	14050600001	Hexagon thin nut M8	4
90	ISO4034	14050000003	Hexagonal nut M10	1
91	W.BX42B.014	11000200876	Rotate the handle assembly	1
92	HC-M45/1	11010900052	Hydro control valve	1
93		11011800002	Flat plug	2
94	GB889.1-86	14050100000	Locknut M5	4
95	BH7-121	11011800063	Buffer block	2
96		11011800001	Nylon washer 12	4
97	CS16M10BN-10*1.5	11010900041	Plain Bearing	1
98	W.BX42B.402	11000100510	Screw connection	1
99	W.BX42B.401	11000100511	Connection fork	1
100	GB6172.1-86	14050600002	Hexagon thin nut M10	1
101	GB5782-86	14010100005	Hexagonal bolts M6×30	1

Main-2



Ser no.	Part no.	T6 code.	Part Name.	Qty
1	HC-M45-1	11010900052	Hydro control valve	1
2	O seal	11011200105	O seal 20×2.4	8
3	W.BX42B.123	11010600077	Valve body connector	8
4	W.BX42B.303a	11010700203	Flow valve - control valve inlet pipe	1
5	W.BX42B.302a	11010700202	Control valve - 3 way connector output pipe	1
6	W.BX42B.301	11010600081	3 way connector	1
7	W.BX42B.128	11010700153	Motor outflow pipe	2
8	155160A1212A	11010900000	Motor 160	1
9	W.BX42B.122	11010700149	Flow Valve inlet pipe	1
10	W.BX42B.126	11010600078	Motor adapter	2
11	W.BX42B.129	11010700154	Flow valve outlet pipe	1
12	W.BX42B.124	11010700150	Pump inlet pipe	1
13	W.BX42B.130	11010600079	Pump suction port connector	1
14	BS/A23.5	11011200004	Combination washer 7/8	1
15		11010900030	Flow valve (0-30L / MIN)	1
16	2PF18L10P02	11010900025	Pump 18 (L)	1
17	W.BX42B.013	11000200875	Oil tank weldment	1
18	M18*1.5-37	11010600002	Hollow bolt	2
19		11011200010	Washer 18	4
20	O seal	11011200106	O seal 24×2.4	2